

PITA NEWSLETTER

Sponsored by the Plum Island Taxpayers and Associates, Inc.

Bringing Plum Island Together

www.plumislandtaxpayers.org

Fall 2022 Issue 2



PRESIDENT'S LETTER

Dear PITA Members,

We are one island and your community organization that speaks with a unified voice to address the most pressing issues facing our residents. It's been a productive year, despite the challenges presented by lingering COVID restrictions, rising energy costs and the added pressure of monetary inflation. Since 1948, PITA has remained steadfastly focused on ensuring that the issues we care about are presented and addressed by our local, state and federal officials. Please remember, your continued support through membership dues and contributions provides the majority of our annual operating capital. Our efforts during this past year have resulted in the following achievements:

Christmas Fair at Plum Island Hall: We will continue our longstanding tradition of hosting the Fair. Crafters have been invited back to our Hall, and we will be selling Christmas trees and wreaths in the parking lot on Saturday, 3 December.

MRBA Working Group: PITA was instrumental in obtaining the funding and permits necessary for the recent river dredging operations that placed much needed sand on our beaches. PITA will continue to perform as the sponsor and host to the Merrimac River Beach Alliance (MRBA), our working group of federal, state, town and city officials whose combined efforts have been critical in responding to the most pressing issues facing Plum Island residents.

Plum Island Hall: Building maintenance remains one of our top priorities. The electronic bulletin board has been replaced

with a new, multi-color digital display for routine and emergency messages. New front door locking mechanisms and bathroom repairs have been completed. Excessive overgrowth has been removed from the garden beds surrounding PITA Hall and replaced with a layer of crushed shell.

PITA Propane & Fuel Oil Buyers' Group: Propane and fuel oil prices have been steadily rising, but PITA members who participate in the Buyers' Group program will have a low, fixed price over the next heating season thanks to our friends at Townsend Total Energy. We remain appreciative for your continued support. Please remember that your membership dues help to keep our Hall open and available not only for your use, but also for use by all our Plum Island social, public and community organizations. Please take a few moments to fill out the enclosed membership renewal form. If you would like to enclose an additional contribution of support, any amount no matter how small will be greatly appreciated and will have an immediate positive impact. We continue to look forward to another great year with you and yours as members of PITA.

With kindest regards,

Ron Barrett
President

Inside this Issue

PRESIDENT'S LETTER
PITA MEMBERSHIP
RESERVATION TERRACE PG. 2
PITA CHRISTMAS FAIR PG. 2
HISTORY PHOTO BOOK PG. 2
PLUMFEST 2022 WRAP UP PG. 3
LIGHTHOUSE UPDATE PG. 4
SEABROOK STATION PG. 5
BUYERS' GROUP PG. 5
ARTIST SPOTLIGHT PG. 6
ELECTRONIC SIGN PG. 6

Events

PITA CHRISTMAS FAIR
DECEMBER 3, 2022, 8AM-3PM

PITA MEMBERSHIP ... it's time to Renew or Join for 2023

It's our Fall membership drive and we really appreciate your support! We are asking for renewals for 2023 to continue our efforts and we welcome new members!

See the President's Letter and Membership Form on our web site at www.plumislandtaxpayers.org

The 2023 membership fee is only \$35/year individual or \$50/year for a family.

Now you can conveniently renew your membership or join online - via PayPal - just click the link "Join PITA online" on our website. You can also print out the Membership Form and mail it back to PITA with your paper check payment.

Some benefits of PITA membership:

- Significant Townsend Energy PITA Buyers' Group discounts for propane and oil
- PITA hall rental discounts
- Knowing that you supported our Island projects

RESERVATION TERRACE FALL 2022 UPDATE

The Newburyport Harbor Federal Navigation Project (FNP) has begun! The USACE (United States Army Corps of Engineers) awarded the FNP contract to H&L Contracting LLC. Plum Island residents are thrilled to welcome the crew and two hydraulic



pipeline dredges Finn and Oyster Bay that have been deployed to dredge the shoaled areas of the inner harbor channel as well as the Merrimack River entrance channel. There is also a booster pump barge alongside the channel and other support vessels working within the harbor.

Terrace continued on page 07

PITA CHRISTMAS FAIR SATURDAY, DECEMBER 3 from 8 AM - 3 PM

The holidays are fast approaching, and our annual Plum Island Christmas Fair will be back again this year! Mark your calendars now and plan to join us out on the Island.

We will have Christmas trees and wreaths for sale outside (delivered free to Island residents' homes), and inside we will be featuring hand-made arts and crafts for sale by local artisans. If you'd like to reserve a crafters table for \$25, please contact our Hall Manager Frank at HallManager@plumislandtaxpayers.org

Also, Santa will make an appearance after his usual route around Plum Island bringing holiday cheer to all our Island children! We hope to have a raffle, a limited food menu, and seating inside the hall. Plans are still in the works for this festive event.

The financial support from the Fair is responsible for a large portion of the upkeep of PITA Hall and we truly appreciate your participation. We look forward to seeing you in December!



PITA Board of Directors

Ron Barrett, President

Jerry Klima, Vice President

Frank Pierce, Treasurer, Hall Mgr.

Kevin Byrne, Secretary

Ron Perkins, Director

Maureen Trout, Director

Susan Grillo, Director, Membership

Lee Lane, Director

Kincade Webb, Membership

2020 HISTORY PHOTO BOOK OF PLUM ISLAND UPDATE

From March to December 2020, Plum Island resident, Maria Casey, captured photos of life on the Island during the COVID-19 Pandemic. She created a 2020 history photo book of Plum Island, which sold out quickly last Spring. Maria has now secured a second printing and will be selling the photo books for \$30 each at the Plum Island Fair on December 3rd. If you would like to reserve a copy, please contact Maria at porchesofplumisland2020@gmail.com

Thank you for your talent and generosity Maria!



INSTITUTION FOR SAVINGS

BUILDING STRONGER COMMUNITIES TOGETHER SINCE 1820.

Main Office: 93 State Street, P.O. Box 510, Newburyport, MA 01950
978-462-3106 Fax 978-462-1980
24-Hour Automated Telephone Banking
Toll Free 800-437-6703



BARRETT TRANSPORTATION

Newbury, MA

Ron Barrett

Tel: 978-462-8579

Cell: 508-641-1500

ANOTHER PLUMFEST IS IN THE BOOKS!

Once again Plum Island was host to amazing music, generous fans and a picture perfect day!

On September 17, thousands of people descended on PI to hear great music for a great cause. The day is all about coming out and sharing the beauty of Plum Island and the music of our community with friends and neighbors. While the festival is entirely free, red buckets and QR codes (new this year) were set up at the performers' locations to collect donations. This year, funds went to the Boys and Girls Club of



Lower Merrimack Valley and the Merrimack River Watershed Council. The event raised a record breaking \$21,000!

PlumFest also set records for number of bands and number of hosts - this year we had 90 bands play at 50 different host properties. At the end of the festivities, organization leaders held a special ceremony honoring PlumFest Founders Cynthia Keefe and Kevin Kelley for the tremendous contributions to create the event and keeping it alive. While they have stepped back as organizers, they are the heart and soul of the event.

Pulmfest Continued on page 4

REAL ESTATE SALES/RENTALS
 OVER 40 YEARS EXPERIENCE MA and NH
DIANNE BURNS
 BROKER/INVESTOR



434 MAIN STREET
 HAVERHILL, MA 01830

978-815-3228
 Fax: 978-465-3852
 dianrealty@aol.com
 www.dianneburns.com

MARY KAY

Kim O'Rourke
 Independent Beauty Consultant

20 Jackson Way, Plum Island
 Newbury, MA 01951-2113
 Cell 978/491-8303
 Fax 978/462-7595
 Email MK.Kimor2019@yahoo.com
 www.marykay.com/korourke1



ADVANCED PRODUCT CONSULTANT

Contact me for a complimentary facial

FISH WINDOW CLEANING
 BRIGHTEN YOUR WORLD

Phil Ferragamo
 General Manager
 (978) 834-6239

5 Market Square Suite B3
 Amesbury, MA 01913

pferragamo@fishwindowcleaning.com
www.fishwindowcleaning.com/3050
 Commercial and Residential • Independently Owned & Operated

FISH OFFERS A 10% DISCOUNT FOR PITA MEMBERS



Newburyport Bank
 JOURNEY WELL

PLUM ISLAND LIGHTHOUSE UPDATE

On Wednesday, October 5th, many members of our community enjoyed a special talk given by maritime researcher, Jon Johansen, at PITA Hall. The presentation was about "Shipwrecks of New England and Beyond" including some of the major shipwrecks of the North Shore!

Plum Island Taxpayers & Associates (PITA) joined together with Friends of Plum Island Light to sponsor this special event, which was free and open to the public.



Maritime history, lobster boats, shipwrecks. These are just a few of the topics that Jon Johansen has spent his life researching and sharing. He is the founder and publisher



of Maine Coastal News, a publication dedicated to topics of boating along the coast of Maine. Jon Johansen is the president of Maine Built Boats; president of Maine Lobster Boat Racing; president of the Board of Penobscot Marine Museum; Founder and Director of the International Maritime Library, and more. After a successful Summer of visitors,



Plum Island Light is now closed for the season. The grounds are open for the public to see the Lighthouse and enjoy the new kiosk full of historic information. The kiosk was designed, assembled, and installed by a dedicated group of members of Friends of Plum Island Light.

To join the Friends, contact friendsofpilight@gmail.com or visit www.friendsofplumislandlight.org

Plumfest continued

PlumFest is a non-profit volunteer-run organization to bring local musicians, island residents and visitors together to showcase the natural beauty and artistry that make Plum Island such a special place. As an early participant in the "porch-fest" movement that is gaining popularity nation-wide, PlumFest brings its own unique flavor to the mix. PlumFest, founded in 2015, is completely run by volunteers and what a job they all did!



Be sure to save the date for next year, September 16th, 2023. You can learn more at www.plumfest.org, and also follow the event on Facebook and Instagram.



Fully Licensed & Insured Professional

EXTERIOR CLEANING

Northeast MA

Owen Roberts
617-820-4382
thesoakpw@gmail.com

LOMBARDI OIL & GAS

Delivering Comfort to Our Community

LombardiOil.com
978.465.7200





Heating
Service ★ Installation ★ Fuel
Air Conditioning

Candy L. Way



Fine Artist
Studio - Gallery
 Ipswich, MA
 (978) 420-5206

candyway@comcast.net
<http://candywayfineart.com>

SEABROOK STATION EMERGENCY INFORMATION

After a false alarm at the Seabrook Nuclear Power Station this Summer, PITA received a request about notifying our community regarding emergency evacuation procedures and evacuation routes. The Massachusetts Emergency Management Agency (MEMA) and NextEra Energy/ SEABROOK are responsible for providing this information annually. MEMA sends a brochure to all households in the 10-mile radius around Seabrook Station (called the "emergency planning zone"). The brochure is titled "SAVE THIS FOR USE DURING AN EMERGENCY AT SEABROOK STATION."

The brochure includes information on how to sign up for emergency alerts through CodeRED, emergency alert system radio stations, emergency numbers and websites. It also has important information on how to shelter in place, what to do during an evacuation, where children in school will be moved to, planning for your pets, understanding radiation and potassium iodide, evacuation routes, and an access/functional needs card to complete and send to MEMA annually if you need special assistance in an emergency.

We hope this information is useful to you. If you need a brochure, you can download a copy here: www.mass.gov/doc/seabrook-nuclear-brochure/download or you can contact MEMA directly through their website at mass.gov/mema or call their non-emergency number at **800-982-6846**.



DID YOU KNOW?

PITA has a Buyers' Group for fuel discounts with Townsend Energy! Many of our members are receiving substantial pricing discounts on propane and oil this winter season by participating in our Buyers' Group program. The sign-up period for this coming year has ended, but you can join the Buyers' Group next Spring.

Interested?

Just follow these simple steps:

1. Join PITA now and renew your membership each calendar year.
2. Watch for more info next Spring in our newsletter about Townsend's propane and oil prices and the sign-up deadlines.
3. Contact Kevin Anderson at kanderson@townsendtotalenergy.com to join the PITA Buyer's Group. Note: you must be a current PITA member.
4. Contact our PITA Townsend liaison, Diane Barrett, at diron@comcast.net to let her know when you have joined the PITA Buyers' Group with Townsend.

Questions?

Contact Diane, at diron@comcast.net for more information and she will help you through the process.



PITA Hall Is Open!!

for Events once again, subject to Covid - 19 protocols.

Weekend Rates Member	\$325
PI Resident Non-Member	\$375
Non-Member	\$450
Commercial	\$550
Weekday Monday-Thursday	
\$100 half day / \$200 Full Day	

Mercy Meals: Free use of the Hall to Island residents for mercy meals, and recognition of your loved one on the PITA sign.

To rent PITA Hall contact Frank at HallManager@plumislandtaxpayers.org or visit www.plumislandtaxpayers.org to fill out the PITA Hall Rental Agreement.

ARTIST SPOTLIGHT INTROSPECTION: COFFEE WITH AN INSPIRING ARTIST

Written by Sandra Turner

They say some people are born with it, the innate ability to express themselves artistically. Many dream of becoming an artist and realize that after reading books, and watching YouTube videos, they are unable to commit to the actual doing. The placing of a pencil or brush in hand and taking that chance of putting a line or a stroke of color down on the white surface in front of them. It can be overwhelming to many.

Then there are those that are introduced to art by a simple offering, a gift certificate perhaps to some local art classes. A spark is ignited and something that may have lied dormant for almost a lifetime now becomes an insatiable need to create.



Noelle Sciuto is one such person, after her retirement she had time to focus on this new experience and came into her own as an artist

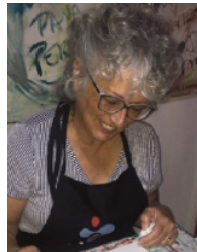
Once Noelle started on her path, she didn't stop after the first six weeks, or six months or even six years. For over the past twenty years she continues as one of seasoned artists attending studio classes at The Artists Playground in Newburyport.

A quiet woman, with a twinkle in her eye and a friendly hello, hasn't been interested in entering her art into shows. She paints for herself and often gifts her finished work to family members and friends.

Noelle has worked in various mediums, watercolor, acrylics, collage and mixed media. She loves to try out new ways of expressing herself and doesn't mind doing the groundwork that is required to master the processes associated with each new medium.

Her love for "the doing" gives joy to her soul and that joy radiates out to all that have the pleasure to be in her presence.

Noelle lived for many years on Plum Island, before moving to Salisbury where she currently reside



Sandra Turner
Artist/Owner
Plum Islander Art

978-519-6353

plumislanderart@gmail.com

NEW ELECTRONIC DIGITAL SIGN AT PITA HALL

A new electronic, full color RGB Optec digital reader board sign has been installed outside at PITA Hall. The sign, which offers state-of-the-art technology for graphics, scrolling, colors and programming, was purchased through Optec Displays (headquartered in Ontario, California) and installed by Markarian Sign Company in Wakefield MA.

The new sign's purpose is to keep our community informed by displaying news, events, and emergency alerts. Personal messages from the public can be requested by contacting HallManager@plumislandtaxpayers.org. Your message will cost \$35 per display. Please make checks payable to PITA at 8 Plum Island Blvd., Newbury MA 01951 with a note in the memo line of your check "PITA e-sign".

PITA received generous donations from Newburyport Bank, NESFC Federal Credit Union, and Reservation Terrace residents toward the cost of the new

sign. To further help offset the cost of this new communications device, you are welcome to make a donation specifically for the sign. We appreciate your support!

NESFC

CREDIT UNION

248 Pleasant Street, Methuen, MA 01844
978-688-8800

CarrStaples&Accardi, CPAs

Certified Public Accountants

Paul Accardi (978) 372-8910

Terrace continued

Approximately 226,000 cubic yards of sandy material will be dredged. A massive pipeline has been installed to provide for the placement of the dredged sandy material onto Plum Island's North Point, Reservation Terrace vicinity. This project will add approximately 400 feet of beachfront to help secure the Point and protect residents' homes from further erosion.

Work hours will be 24 hours a day/seven days a week. A Local Notice to Mariners was issued by the US Coast Guard giving notice to steer clear of the dredging equipment and to proceed at minimum headway speed. Signs have been posted and fences erected on the beach so this important work can be safely done. The work areas, access ways from the parking lot to the beach and placement area will be closed for the duration of the project - October 2022 through March 31, 2023. Please honor this closure and stay off the beach in this area!

For more information and ongoing updates, please visit the City of Newburyport web page at <https://www.cityofnewburyport.com/planning-development/harbor-dredging-project>. There is also a link to this website posted on the PITA Hall electronic sign.

According to Newburyport Mayor Sean Reardon, next steps will be to "begin discussions with USACE on fixing the issues with the jetty that is causing the beach to disappear. The dredge is an important first step and I am thrilled we are getting this in before going through another storm season here on the Island."

Thanks to Lela Wright and Susan Grillo for photos and to H&L Contracting for the Construction Flyer.



Blue Ribbon
Water

Bill Cooper

bill.cooper@blueribbonwater.com

Mobil 978-992-8172

Direct 978-993-4355

blueribbonwater.com

"Bringing Cleaner, Healthier, Local Water to Every Faucet"

METZYS

CATERING

#MAKEITMETZYSATPITA

TACO BAR

MEAL KITS

COCKTAILS TO-GO

FOOD TRUCK

EVENTS

CONTACT STEFANIE AT SCOLBY@METZYS.COM
TO BOOK YOUR NEXT EVENT

METZYS.COM

Newburyport Harbor Overview

Newburyport Harbor is located in Newburyport, Massachusetts. The Harbor consists of a Federal Navigation Project (FNP) to include:

- 15-foot deep Mean Lower Low Water (MLLW) Entrance Channel
- 9-foot deep MLLW Inner Harbor Channel

Newburyport Harbor was last dredged October 2010 when approximately 165,000 CY of sandy material was removed from the 15-ft Entrance Channel of the FNP with placement at Salisbury and Plum Island Beaches.



Aerial Photo looking North from Plum Island

Surveying and Sampling/ Testing Results

- Last Sampling Event Completed: July 2016 (FNP) and 2017 (North Point)
- Consists of sandy material.
- The placement sites identified for this maintenance dredging event is on the beach at North Point/Reservation Terrace.

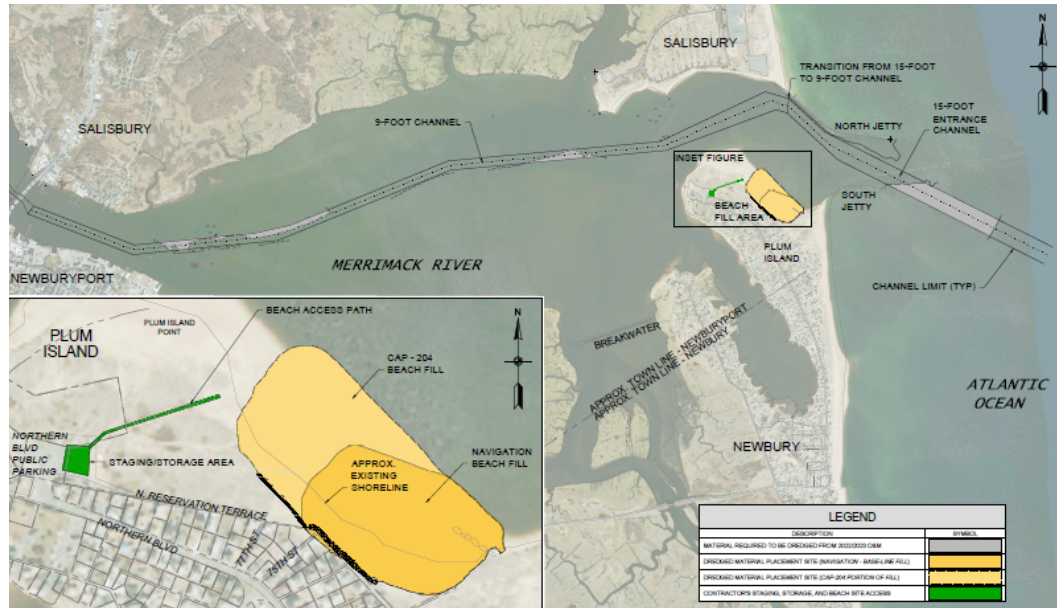


Navigation Maintenance Dredging Information

Newburyport Harbor, Newburyport, MA

Project Specific Information

Map of Interest Area

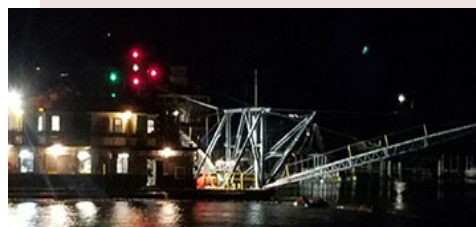


2022 Maintenance Dredging

- Contractor: H&L Contracting, LLC
- Dredges: 16" Hydraulic Pipeline Dredge (FINN)
20" Hydraulic Pipeline Dredge (OYSTER BAY)
- Total Construction Contract: \$8.72 million
- Dredge Amount : approx. 226,000 cubic yards
- Work Hours: 24/7
- Environmental Windows :
Beach Work
September 1, 2022 through March 31, 2023

Inner Harbor Dredging
September 1, 2022 through February 15, 2023

Entrance Channel Dredging
September 1, 2022 through March 31, 2023



Photos from <http://hlcontractingllc.com>



PLUM ISLAND TAXPAYERS AND ASSOCIATES
8 PLUM ISLAND BOULEVARD, NEWBURY, MASSACHUSETTS 01951

MEMBERSHIP APPLICATION 2023

PLEASE NOTE: You can pay conveniently online via PayPal at <http://www.PlumIslandTaxpayers.org>
Or mail your completed Membership Application and check payment to the PITA at the address above.
We do not sell or publish your membership for any reason.
We will not call your mobile phone or send a text unless there is an island specific need.

Name: _____ Primary Phone: _____

Mailing Address: Street or P.O. Box _____ My E-Mail: _____

City/Town _____

State/Zip Code _____ Please email the PITA Newsletter to me to save printing costs

Plum Island Address: Same as above

Individual Membership: \$35 per year		
Family Membership: \$50 per year	Dues Amount	\$ _____
<i>Please consider additional contributions - any amount will be most appreciated and will be used for Plum Island projects.</i>	Additional Amount for projects:	\$ _____
	Total Amount	\$ _____

I would like to be contacted for PITA volunteer projects: **Yes** **No**

If you like, tell us your special skills or interest for volunteering:

PLEASE COMPLETE THIS MEMBERSHIP BENEFITS SURVEY:

Do you currently participate in the Townsend Energy Buyers Group for PITA members? **Yes** **No**
For Propane? **Yes** **No** For Oil? **Yes** **No**
If NO, would you like to participate in this Buyers Group Program? **Yes** **No**

>> **If Mailing, Please** make your check payable to “PITA” for the correct dues amount plus any additional funds, and your check and fold over your check and put it in the envelope (no staples please)

Office Use: Dues Paid _____ Amount: _____ Check#: _____